

APRIL

April, 2026

MEMBERSHIP, RESERVATIONS

MEMBERSHIP

You must be a Connections member to participate in any of the Connections activities.

Your check for **\$25**, along with a Membership Form*, should be mailed to

CONNECTIONS: PO BOX 5314, SUN CITY WEST, AZ 85376.

**Make checks
payable to CONNECTIONS!**

Forms are available on our website, scwconnections.com

at luncheons

or from Debora Braun-Gangler

*Membership Form is for New Members Only

NEW***LUNCHEON RESERVATIONS +++++ NEW**

DEADLINES FOR RESERVATIONS AND CANCELLATIONS ARE NOW THE SAME

DEADLINE FOR APRIL IS WEDNESDAY, APRIL 1, 2026

One check per reservation please—No Exceptions!! Cost for members and guests is \$33.00.

If you are bringing a guest write a separate check for \$33.00 with guest name on the memo line. Use the memo line on your check to indicate: Month luncheon (i.e. MAY lunch); if you want to sit with someone; or if you need a vegetarian or gluten-free meal. No carry-out orders allowed

Send to: Connections, P.O. Box 5314, Sun City West, AZ 85376

LUNCHEON RESERVATIONS CONTACT

DENA BARNES 503-720-7258

IF NO ANSWER PLEASE LEAVE A MESSAGE FOR A RETURN CALL

Please respect our request to **NOT** arrive before 11 AM

Lunch is served at 11:40 a.m.



Connections' Mission:

The purpose of this club is to provide a format for Sun City West and Corte Bella women to meet other local women, get acquainted, form enduring friendships, and support worthy causes within the community.

CONNECTIONS LUNCHEON

Briarwood Country Club

APRIL 9, 2026

Briarwood Burger, House Made Chips, and Raspberry Sorbet

**Coffee (Regular & Decaf) Iced and Hot Tea
Rolls & Butter**

The gluten free and vegan option is a Cobb Salad-NO CHICKEN

ABSOLUTELY NO SUBSTITUTIONS

NEW RULES FOR MAKING LUNCHEON RESERVATIONS:

We have been notified by Briarwood Country Club of a change in rules on how we handle making reservations for our 2nd Thursday Connections Luncheon.

Going forward, our FINAL number of participants for our Connections Luncheon has to be called in and finalized ONE WEEK before the luncheon. No changes to our numbers can be made after that date.

Our **DEADLINE** for reservations AND CANCELLATIONS going forward will be at **NOON ON THE FIRST WEDNESDAY** of each month.

Due to our slow/unpredictable service from the Post Office in receiving checks at our PO Box we request that your check is in the mail 10 days before the first Wednesday deadline. If you are mailing it 10 days ahead, it would be appreciated that you give Luncheon Reservation Director Dena Barnes a call (503-720-7258) to let her know your check is in the mail so she can have you on the attendance list and will watch for your check to arrive. PLEASE ALWAYS LEAVE A MESSAGE FOR A CALL BACK FROM DENA.

Checks arriving after the first Wednesday without a call to Dena to expect it will not be honored for that month's luncheon. You will be notified you did not meet the required deadline and you can either ask for it to be moved to the next month, shred or returned to you.

WE ARE VERY SORRY FOR THESE NEW RULES THAT NEED TO BE FOLLOWED. IF WE HAVE MORE PEOPLE IN ATTENDANCE THAN WE HAVE MADE RESERVATIONS FOR THERE WILL BE EXTRA CHARGES ADDED TO OUR FINAL BILL BEYOND THE \$33.00 YOU ARE ALREADY PAYING.

Thank you for your understanding in this matter.

Eleanor O'Brien

2025-2026 EXECUTIVE BOARD

President	Pat Michel	412-613-0419
Vice President/President Elect	Cathy Templin	630-917-8494
Secretary	Penny Duncan	602-758-5199
Treasurer	Marilyn Sage	515-314-9291
Luncheon Director	Dena Barnes	503-720-7258
Facility Director	Eleanor O'Brien	952-270-5352
Luncheon Asst.	Carolyn Daniels	951-214-5618
Membership Director	Debora Braun-Gangler	847-287-7328
Publications Director	Mary Monfre	321-537-1577
Historian/Advisor*	Kathy Adams	623-547-5268
Parliamentary/Bylaws Advisor*	Kathy Adams	623-547-5268

* Non Voting Member

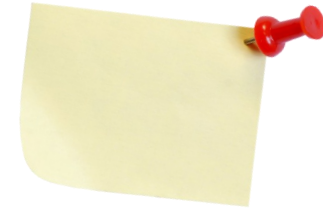
2025-2026 STANDING COMMITTEES

Auditors	Linda Weatbrook	928-830-8309
Face Book Page	Barbara Brennan	602-524-4195
Photographer	Jackie Britt	602-999-7270
Programs	Cathy Templin	630-917-8494
Publicity		
Sunshine	Jackie Britt	602-999-7270
Ways & Means Chair	Corrine Povich	623-261-7878
Ways & Means Asst.	Stephanie Rogall	623-544-0735
Ways & Means Asst.	Terrie Morrissey	480-522-5083
Ways & Means Asst.	Thelma Halloran	847-212-1930
Website	Mary Monfre	321-537-1577

2025-2026 SOCIAL COMMITTEES

Bridge - Couples/Ladies Duplicate	Myrna Packer	623-215-5572
Social Bridge - Women's Club	Bev Jenkins	602-738-8469
Chicks with Sticks	Gerry Zopf	623-680-4140
Dine Out Dinners	Various	
Connections at the Movies	Barbara Brennan	602-524-4195
Luncheon Games - Bridge	Marilyn Sage	515-314-9291
Luncheon Games - Hand & Foot/MJ	Carolyn Daniels	951-214-5618
Bunco	Kay Coffey*	623-505-7697
Book Lovers	Nancy Pines	623-734-4137
Hand & Foot - couples evenings	Eleanor O'Brien	952-270-5352
Mexican Train - couples	Kay Coffey*	623-505-7697

Greetings from our President



Spring Greetings It's hard to believe that we are heading into the season of spring and will soon be celebrating Easter! Time flies for sure. I've missed being with you in February as well as this month, especially the fashion show. I am thankful for my VP, CathyTemplin for taking over and doing such a great job! Hopefully, many of you will be at the April luncheon which will be followed by our Kentucky Derby Race! This has been an exciting event! Don't forget to wear your beautiful hats to celebrate this fun-filled activity!

Looking forward to seeing you all in April.

Warmest Regards,

Pat Michel
President



Monthly Meeting Attendance

Attendance Concerns

There has been a significant decline in attendance at our monthly meetings, reaching levels that are cause for concern. To sustain our activities and ensure the success of each gathering, it is essential that at least 55 members attend every month. Recently, achieving this number has proven challenging.

Member Participation

We kindly ask each member to make an effort to attend at least two or three meetings per year. Your participation is vital to the ongoing vibrancy and effectiveness of our organization.

Menu Information

To help members plan ahead, we publish the menu for each meeting in the newsletter one month prior. The menu options vary, ranging from simple sandwiches to a complete meal. These choices are designed to help manage costs while providing variety and enjoyment for everyone.

Committee Chair Reports

APRIL 9, 2026 LUNCHEON REMINDER

This month we are celebrating the KENTUCKY DERBY

As a reminder the DEADLINE for RESERVATIONS AND CANCELLATIONS for our APRIL 9, 2026 Luncheon is: NOON, Wednesday, APRIL 1st. NO CHANGES CAN BE MADE AFTER THAT DATE.

Dena Barnes (503-720-7258) will stop taking lunch reservation requests by NOON, Wednesday, April 1. (PLEASE ALWAYS LEAVE A MESSAGE AND SHE WILL RETURN YOUR CALL.) Our FINAL number of participants for our Luncheon is due to Briarwood ONE WEEK before the luncheon – NO CHANGES can be made as they charge us for the number of reservations made not how many people they serve.

Be sure to get your checks in the mail at least a week ahead of the deadline. If you are unsure if your check will arrive on time please give Dena a call to make sure your name is on the list and she will watch for your check or discuss other options. Don't forget to write on your check if you need an alternate meal.

Checks arriving after the first Wednesday without a call to Dena will automatically be moved forward for the April luncheon. You will be notified you did not meet the required deadline and you can either ask for it to be moved to the next month, shred or returned to you.

Menu: Briarwood Burger, House Made Chips, and Raspberry Sorbet

Program / Entertainment: REMEMBER TO Wear your fancy hats

Kentucky Derby race

FOR MAY LUNCHEON: INSTALLATION OF OFFICERS

Dena Barnes, Luncheon Reservations Director

Eleanor O'Brien, Facilities Director

Committee Chair Reports

Committee Chair Reports

BOOK CLUB

Nancy Pines Chair

**Book Club meets the Third Tuesday of the Month at 10:30 a.m.
Upcoming Selections for 2026 include:**

April 21st: The Frozen River by Ariel Lawhon

May 19th: The Women of Arlington Hall by Jane Healy.

**For more information who will Host
or to get on our Book Club list drop me a note at:
scwCNXbookclub@gmail.com**

**Happy Reading
Nancy**



Committee Chair Reports

Committee Chair Reports

BARLEEN'S "SEASONS BEST" SHOW for CONNECTION CLUB MEMBERS and FRIENDS

The "SEASONS BEST" BARLEEN'S SHOW Saturday, March 28th is full! This is your last chance to see the very best of all the Barleen's Shows, all in one extraordinary show! This Super Show features the season's most-loved performances. It's guaranteed to leave you singing, laughing, and cheering for more.

We will meet at the Shepherd of the Hills Methodist Church at 13658 Meeker starting at 9:15 A.M. This will be a handicap bus.

DO NOT ENTER the bus until you are checked in by MARILYN KLOHA!

We will leave **PROMPTLY** at 9:45 A.M.

QUESTIONS ?

Call Marilyn Kloha at 586-260-5234

HELP WANTED

Still no volunteers



Ladies, we need help! Clubs in SCW do not exist without the volunteer brigades. Ladies in several positions within Connections have been on the job much longer than they should have to! Please consider signing on as an assistant to these positions:

Publications Director
Ways & Means (handle raffle tickets!)

Contact Pat Michel
pmichel21@comcast.net



Committee Chair Reports

MEMBERSHIP

2027 Dues need to be submitted no later than April 30th. Please send your check to Connections, P. O. Box 5314, Sun City West, AZ 85376, or bring to the luncheon. If mailing, please note the word DUES on the outside of your envelope. Thanks!

**Debora Braun-Gangler
Membership Chair**

NEW BUSINESS

Marilyn Sage presented the proposed slate of officers for 2026-2027.

President—Pat Michel

Vice President—Cathy Templin

Secretary—Penny Duncan

Treasurer—Marilyn Sage

There were no nominations from the floor.



For complete member information, please go to the website scwconnections.com .

March meeting included a St. Patrick's Day Celebration meal!



FASHION SHOW—MODELS: GLADYS CARVERS; STEPHANIE ROGALL; KATHLEEN BLOECH;
KAY COFFEE; SHIRLEY SONSALLA; MARY LOU IRONS



KIM STUTZMAN—DIRECTOR; JODIE—STYLIST
BeYoutiful Boutique



Gladys Carvers



Kathleen Bloech



Kathleen Bloech



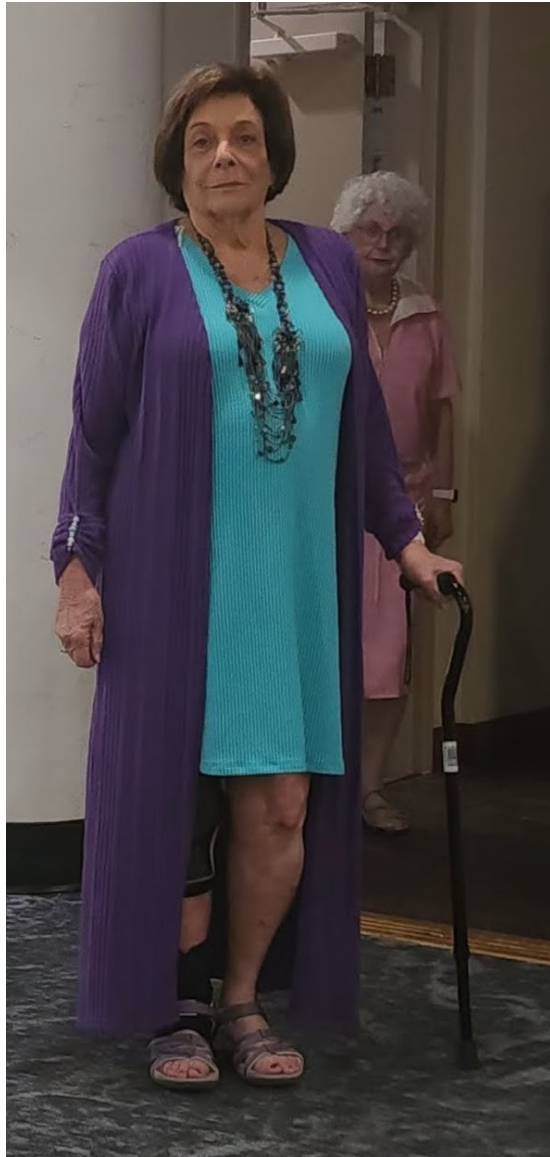
KAY COFFEE



MARY LOU IRONS



SHIRLEY SONSALLA



STEPHANIE ROGALL



L-R: Kim Stutzman, Director, Glays Carvers, Stephanie Rogall, Kathleen Bloech, Kay Coffey, Shirley Sonsalla, Mary Lou Irons, Jodie Stylist